

Success is the Goal!

At BuckLunch, we are interested in helping you maximize the potential of your wildlife plot habitat. Therefore, we provide high quality, deer attractant sugarbeet seed and expert advice on planting and maintaining exceptional food plots. Our agricultural staff has many years experience and is eager to help you succeed!



1-888-331-8997
www.bucklunch.com

Nutrition

Sugarbeets are a great addition to any wildlife plot. Deer love to eat both the foliage and the roots and the nutrition is excellent. Sugarbeet tops contain about 52% digestible dry matter and 13% of that is crude protein. Eighteen percent of a sugarbeet root consists of carbohydrates and 4.4% is fiber or pulp. As a result, deer are drawn to the protein and energy that sugarbeets offer.

Quality Seed

Our sugarbeet seed meets the high standards of commercial sugarbeet growers, which means our seed has excellent germination, vigor and emergence characteristics. Our seed is tested for germination and purity to ensure its quality. Treated seed is coated with fungicides (Apron and Thiram) that protect the seedlings from soil-borne and seed-borne diseases as they germinate and emerge.



BuckLunch Sugarbeet Seed:
Bare Seed (left), Treated Seed (right)

Do you run a farm supply store, co-op, seed dealership or sporting goods store? We are looking for retail partners! Send us an email or call us at 1-888-331-8997.



BuckLunch contains sugar beets, which are a superior deer attractant.

BuckLunch.com

BuckLunch
P.O. Box 764
1967 West Fifth Street
Sheridan, Wyoming 82801

Phone: 1-888-331-8997
Fax: 307-762-8301
Email: sales@bucklunch.com
Website: www.bucklunch.com

Wildlife Plot Seed




BuckLunch.com

We have the seeds
for your wildlife plot needs.

1-888-331-8997
www.bucklunch.com

Enhance Your Wildlife Plots

Price List

BuckLunch sugarbeet seed is available in 1, 5, 10 and 20 pound quantities packaged in reclosable, disposable plastic buckets. Treated seed has a fungicide coating for better field emergence. Please call for quantities over 20 pounds.

Amount	Price*		Plants
	Bare	Treated	
5 Lbs	\$48.95	\$58.95	½ - ¾ acres
10 Lbs	\$73.95	\$93.95	1 - 1¼ acres
20 Lbs	\$132.95	\$172.95	2 - 2½ acres

*Prices subject to change. For most current prices go to www.bucklunch.com.



Planting

Sugarbeets grow well in almost all soil types, but do require generous amounts of moisture (12-18 inches of rain per 5 month season) to germinate and grow. For wildlife plots, we recommend broadcasting 8 to 10 pounds of BuckLunch sugarbeet seed per acre and lightly incorporating with a harrow or light cultivator. This rate can be reduced proportionately if blended with alfalfa, clover or other seed.

Soil should be fertile with at least 100 units of actual available nitrogen. Fertilize, if necessary, so that there is 100-200 lbs/acre actual nitrogen. If you are not sure of the soil fertility, have your soil tested. Your local farm co-op or fertilizer dealer can usually help with this.

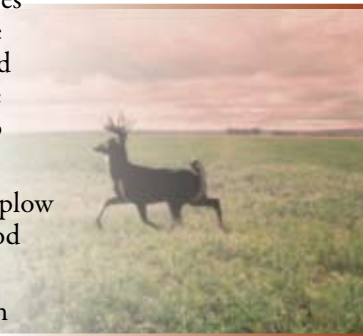
Growing & Seasons

Sugarbeets may take 4 days to 3 weeks to germinate and emerge, depending on conditions. The first stage of beet growth is the canopy or tops. This will be the main growth phase for 4-5 weeks. Then the root growth will become the primary growth phase and that will continue for the next 4-6 months until they reach maturity. Temperatures at freezing (32°F) or below may cause beet loss.

Region	Plant Dates	Forage Season
Northern U.S. & Canada	April 1 - June 1	Summer & Fall
	April 1 - June 1	Summer
Central U.S.	Aug 15 - Sept. 15	Fall
	Sept. 1 - Oct. 1	Winter/Spring
Southern U.S.	Feb. 15 - April 15	Spring/Summer
	Sept. 15 - Oct. 15	Winter/Spring

Planting Instructions

- Optimum soil temperature range for planting is 55° F to 70° F. Temperatures above or below this range may reduce germination and emergence. For weed control, Roundup® (Glyphosate is the generic form) may be applied prior to tilling or just prior to planting.
- Condition the soil with a disc, chisel plow or similar equipment to prepare a good seedbed.
- Drag the seedbed with a drag or chain link fence to further prep the soil.
- For starter fertilizer use 50 to 100 pounds (per acre rate) of 16-16-16 or 13-13-13 fertilizer. This provides additional nitrogen, phosphorous and potassium to the soil for healthier plants.
- Broadcast 8-10 lbs or drill 5-8 lbs sugarbeet seed per acre. If broadcasting, lightly incorporate seed into the soil with a drag or light cultivator. This rate can be reduced proportionately if blended with alfalfa, clover or other seed.
- Simply set the broadcaster to 2 on most spreaders or about ¼ inch (better to have setting set smaller and overlap than to run out of seed).
- Drag the seedbed and cover the seed with ½-1½ inches of top soil. If you have access to a roller or culti-packer, this works well to firm the seedbed and promote good seed-to-soil contact.
- Wait for rain or irrigate with about one inch of moisture. Sugarbeets require 12-18 inches of moisture during a five month growing season.
- Wait about two weeks after emergence and thin the beets with a row crop cultivator or disc set at a fairly straight angle. About this same time, you may apply another 20 to 30 lbs/acre of actual nitrogen (e.g., 44 to 65 lbs of 46-0-0).
- If moisture is adequate, you may apply two additional 50 lbs/acre applications (e.g., 100 to 110 lbs of 46-0-0) of actual nitrogen at about 6 to 8 week intervals. Basically, the more nitrogen available without burning the beets, the greater the foliage protein value will be, and the larger the roots will grow.



Sugarbeet Seedlings (5-7 Leaf Stage)



Mature Sugarbeet Tops (4-5 Months)



Full Sugarbeets (4-5 Months)